

**NOTICE**  
The purchaser agrees when purchasing this plan (the "Plan"); 1) the purchaser has acquired the right to build or construct the object depicted on the Plan (the "Project") for his/her/its personal use only and not for any commercial use. 2) reproduction of the Plan in whole or in part by any means whatsoever is strictly prohibited. 3) Any profits from the Project shall not be liable for any willful misuse or negligent use of this plan, the Project or any tools used to construct the Project or for any loss or damage resulting therefrom.

**NOTES:** Read all directions before beginning  
Carpenters glue should be used to reinforce all joints  
Countersink all screw holes  
Check that all pieces fit before attaching  
Dimensions in brackets denote millimeters

### Directions

- 1) Lay out your material on your workbench, as outlined in the material layout and cutting diagram (Fig 1 & 2). Label all pieces with a pencil. Be sure to leave a small space between cuts with a pencil. Be sure to double check your measurements are given. To shape piece F, rip the 2x4 to a 1" thick piece, and draw a line down the middle of the 11" side, set your saw depth disappears to make the curve. Do not sand any closer than 3/4" from each end. It would be best to borrow the use of a bandsaw for this operation. NOTE: follow instruction 2 before starting on piece F.
- 2) Glue and clamp together pieces D and E, as well as C and B, as shown (Fig 3). Let glue set overnight.
- 3) Cut notches in legs as shown (Fig 4) using a finishing saw and chisel. Now cut the topers and glue up from the bottom, starting on the inside edge (run-notched) for the two topers cuts. The upper toper for the back leg is only tapered on one side, the side that faces the front. The toper begins on a 2 1/2" square 2" above the notch, and tapers to a 2 1/2" x 1 1/4" rectangle at the top of the chair. You can build a saw guide (illustration 1) for your table saw to assist in these cuts.

### OVER

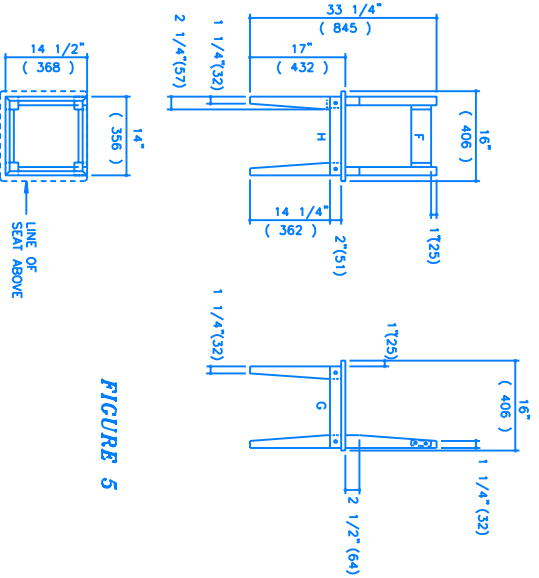
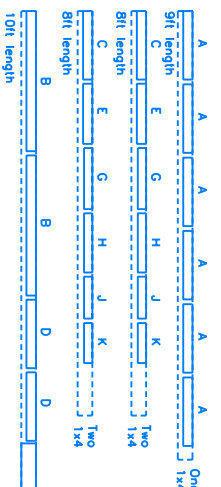
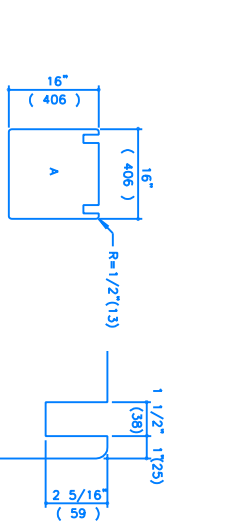
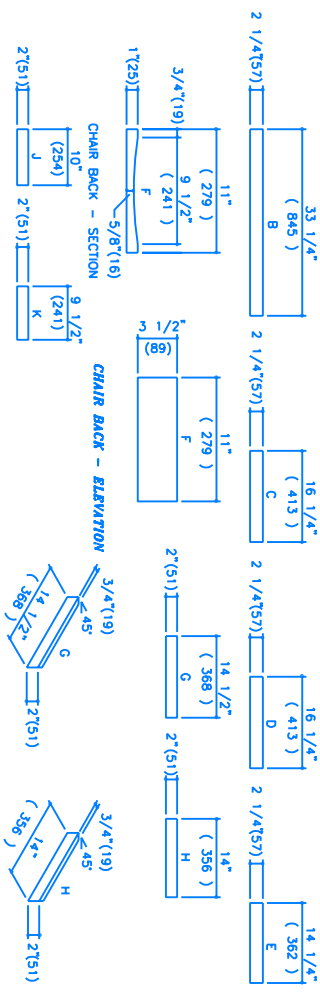


FIGURE 5



MATERIALS LAYOUT  
FIGURE 1



CUTTING DIAGRAM  
FIGURE 2

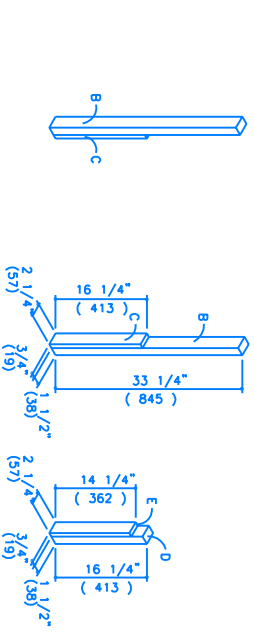
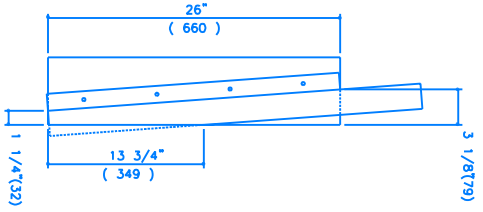


FIGURE 3



SAW GUIDE FOR  
CHAIR LEG  
ILLUSTRATION 1

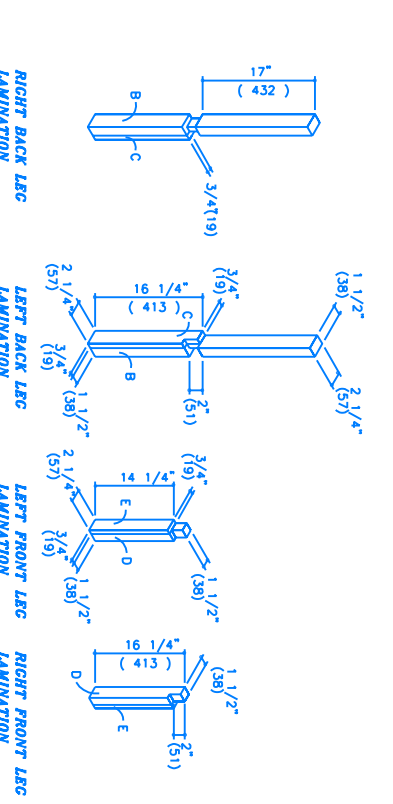
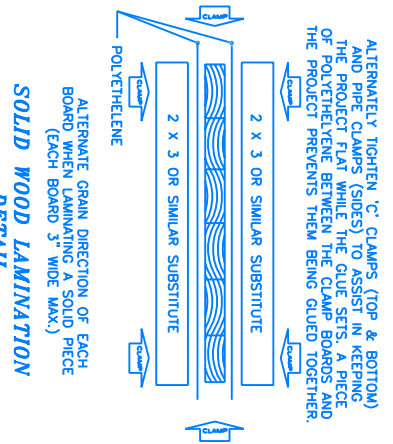


FIGURE 4



SOLID WOOD LAMINATION  
DETAIL

ALTERNATELY TIGHTEN 'C' CLAMPS (TOP & BOTTOM) AND PREP CLAMPS (SIDES) TO ASSIST IN KEEPING THE PROJECT FLAT WHILE THE GLUE SETS. A PIECE OF POLYETHYLENE BETWEEN THE CLAMP BOARDS AND THE PROJECT PREVENTS THEM BEING CLUMP TOGETHER.

### MATERIALS LIST

- \* NOTE: MATERIAL FOR ONE CHAIR ONLY
- Approx. fifty 1 1/4" #8 flathead screws
  - Approx. ten 1 1/2" #8 flathead screws
  - Approx. four 2 1/2" #8 flathead screws
  - Twenty eight wood plugs or 14 of 3/8" wood doweling

### MATERIALS LIST

- Sandpaper  
Carpenters Glue  
Stain and varnish, or oil  
Pre-laminated table top (3/4" thick)  
or 3/4" plywood and edge tape  
One 10, 2x4 (1 1/2" x 3 1/2")  
Two 6, 1x4 (3 1/4" x 1 1/2")

### TOOLS

- Table Saw  
Jigsaw  
Finishing Saw  
1/2" wood chisel  
Square  
Pencil and measuring tape  
Three 12" bar clamps  
1/16", 1/8" and 3/8" drill bits  
Four 6" C-clamps  
Screwdriver